



Series 1. Manually Operated Security Roller Shutter

Tested to the essential characteristics of
EN13241:2003 + A2:2016

- CE & UKCA certified
- Unobtrusive design
- Assembled from high-quality components
- Wide range of colour options
- Simple and safe operation

Our Series 1 'Push-up' roller shutter is a compact and robust product ideally suited to protect retail and commercial properties. It is designed for environments which require a neat and unobtrusive physical security deterrent. In addition, it provides ease of operation when mains electrical power is a constraint.

The shutter utilises hard wearing steel components, ensuring a long-life span, and can feature a galvanised, plastisol (curtain only) or polyester powder coated finish which is available in a wide range of colours.

A standard feature within the design is a curtain assembled from solid, 76mm scrolled lath, with further options of a perforated curtain, should light transference, ventilation or transparency be requirements.

Included within the design is an anti-fall device (safety brake) which will prevent the door from dropping suddenly in the unlikely event of

a mechanical failure. A spring-loaded barrel provides counterbalance, ensuring ease of operation for the user.

Each design has been thoroughly tested and inspected by an accredited independent testing group enabling us to issue Declaration of Performance. Performance characteristics are according to harmonised standard EN 13241:2003 + A2:2016, giving our customers piece of mind that the door systems we manufacture are of the highest quality and are fully compliant with UK and European directives.

All of our roller shutter systems are manufactured in house at our production facility in Wigan, Greater Manchester, and are subject to continuous product development ensuring the products we offer are of the highest quality whilst maintaining ease of installation.



Security bullet lock fitted to each guide.



Option for 76mm perforated lath. Providing vision, airflow and light transference.



Canopy / barrel cover included as standard, for security and provides protection from the elements.



Alliance
DOOR ENGINEERING

01942 683601 | info@alliancedoors.co.uk | www.alliancedoors.co.uk



Compact and unobtrusive design



Wide range of colour options

Specification:

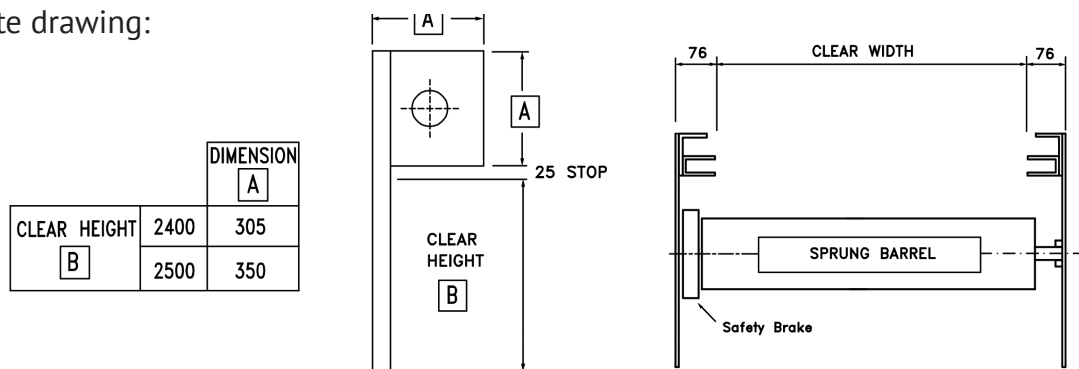
- Curtain assembled from solid, 76mm curved steel lath
- Compact, flag arrangement
- Spring-assisted barrel assembly
- Galvanised finish as standard
- Safety Brake (anti-fall device)
- Barrel canopy
- Bullet / pinson lock fitted to each guide
- Suitable for opening up to 2500mm w x 2500mm h

Options:

- Wide range of colour options – polyester powder coated to a RAL or BS colour or plastisol coating to curtain exterior
- Perforated curtain
- Centre lock (fitted to bottom rail)

NB: To prevent unwanted activation of the inertia safety brake, the shutter must be operated in a slow, smooth and controlled manner.

Template drawing:



This drawing is copyright and exclusive property of Alliance Door Engineering Ltd and must not be copied, used or exhibited without prior consent.



Profile
DOOR ENGINEERING

Folding Door Division of Alliance Door Engineering Ltd.

Alliance Door Engineering Ltd.

Units ABC, 10 Stephens Way, Warrington Road Industrial Estate, Wigan, WN3 6PH
01942 683601 | info@alliancedoors.co.uk | www.alliancedoors.co.uk